

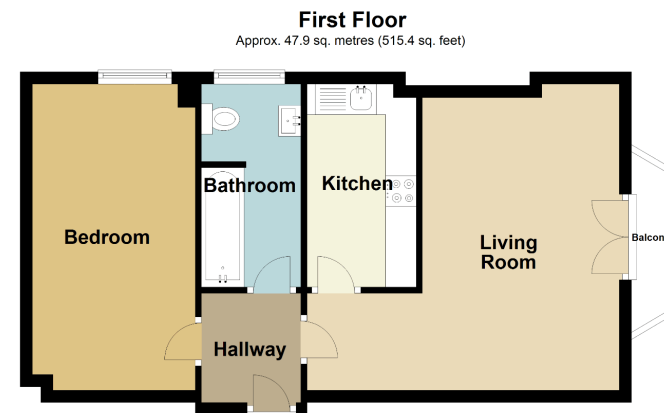


Flat 18, St Mildreds Court, Beach Road, Westgate-on-sea

£150,000

1 0 0

- CHAIN FREE
- Possible tenanted investment
- First floor apartment
- Balcony off living room
- Well presented throughout
- *Lift & Stair Access*
- Hop skip and jump from beach
- Close to town and station
- Well managed block



Total area: approx. 47.9 sq. metres (515.4 sq. feet)

Whilst every effort has been made to ensure the accuracy of the floor plan contained here, measurements of doors, windows, rooms and any other items are approximate and no responsibility is taken for any error, omission or mis-statement. This plan is for illustrative purposes only and should be used as such by any prospective purchaser. The services, systems and appliances shown have not been tested and no guarantee as to their operability or efficiency can be given.
Plan produced using PlanUp.



If you are looking for a spacious one bedroom apartment close to the beach, town and train station then look no further. You might be downsizing but definitely not downgrading, you could be looking for a weekend retreat near the coast and beach or a lock up and leave. You could even be looking for a turnkey investment opportunity. If you are then this could be the perfect property for you.

We love this home - the building is quite special and in a very special location, just moments from the Blue flag Awarded St Mildred Bay beach. The town centre with its restaurants, train station and shops are only minutes away. Westgate-on-Sea is a hidden gem of a town with sandy beaches and a scenic high street with Victorian canopied shops including a traditional butchers and greengrocers. There's a train station with links to London, a cinema and a good selection of places to eat and drink – everything you need is right here.

